

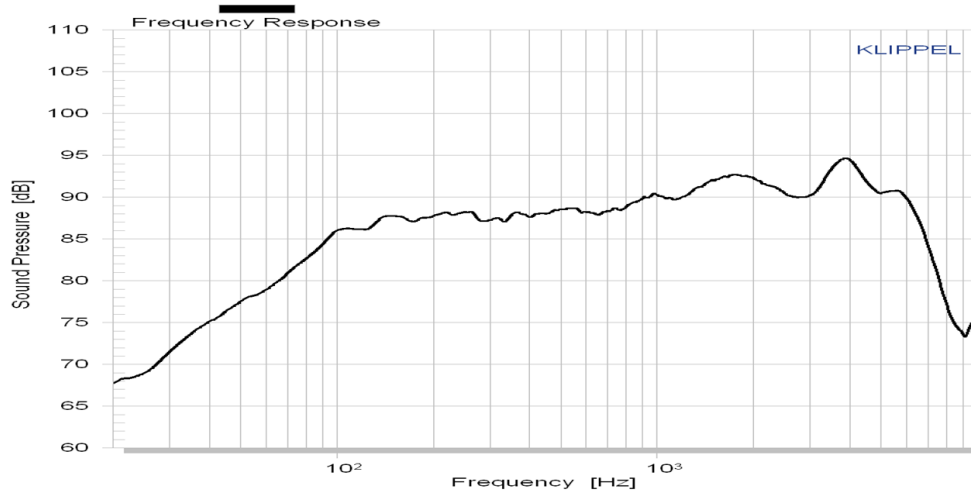
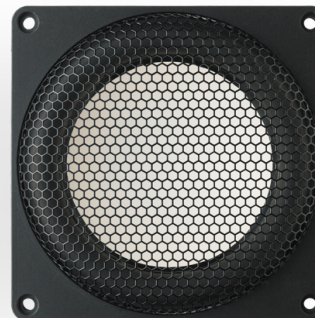
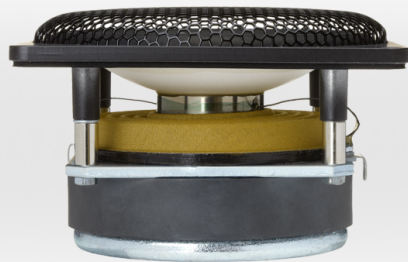
## C90-6-089

Bass - midrange driver

DOMEMATERIAL: CERAMIC  
APPLICATION: BASS - MIDRANGE  
NOMINAL DIAMETER: 130 mm  
SENSITIVITY: 89.5 dB

### MAIN FEATURES :

- OVERHUNG MOTOR DESIGN
- 38 MM TITANIUM VC FORMER
- SOFT RUBBER SURROUND
- VENTED POLE PIECE & SPIDER
- 70 HZ - 3 KHZ IN VENTED BOX

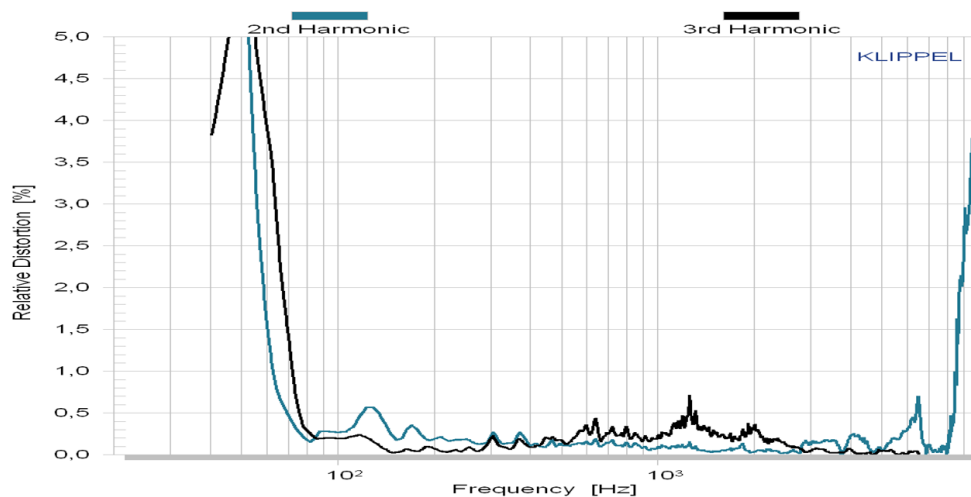
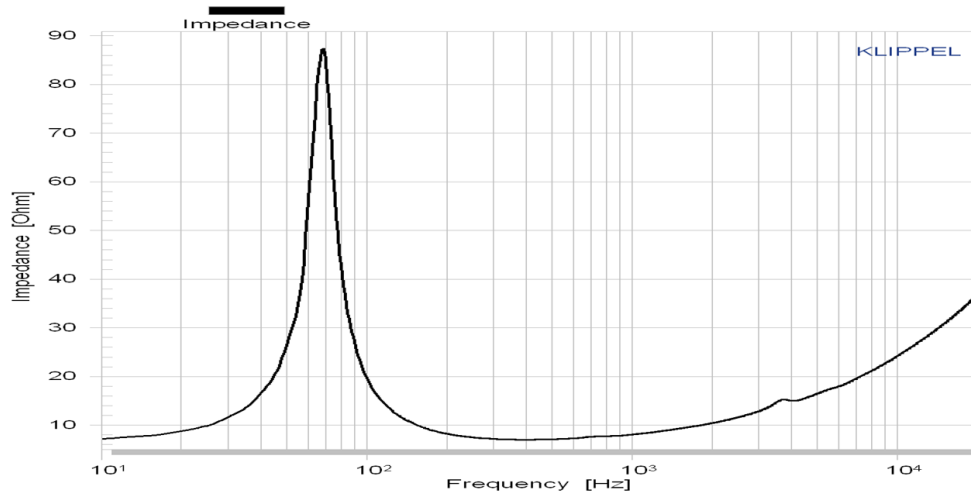


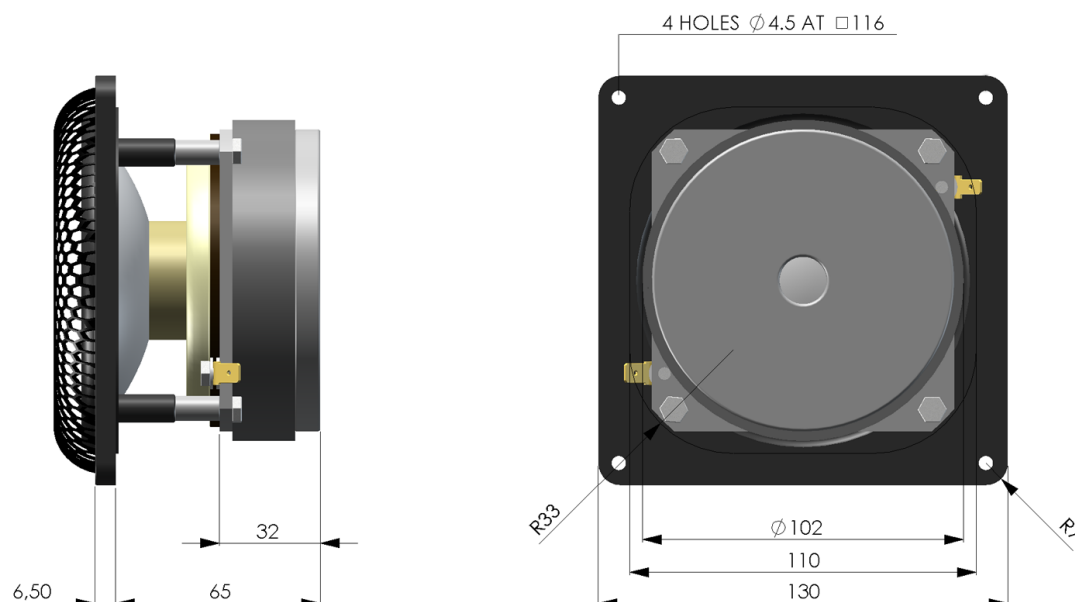
The **C90 - 6 - 089** is a 5 inch midrange driver with ultra hard ceramic dome.

A **FEA optimized** overhung motor design with 38 mm titanium voice coil former guarantees very low energy storage and good heat transfer.

The low loss rubber surround and a **thin fabric spider** center the moving parts with high linearity.

We recommend a bass - midrange application from 70 Hz – 3000 Hz.




**Mechanical data**

Overall diameter	130	mm
Cutout hole square	111	mm
Frontplate depth	6.5	mm
Overall depth	64.5	mm
Motor assembly diameter	102	mm
Motor assembly depth	32	mm
Screw fitting	DIN 7984, 4mm	
Terminal	+ : 6.3 x 0.8 / - : 6.3 x 0.8	
Shipping weight / net weight (one piece)	2.0 / 1.8	kg
Shipping size (pair)	180 / 180 / 240	mm

**Thiele/Small Parameters**

Sensitivity (2.83V / 1m)	Lp	89.5*	dB
DC-resistance	Re	6.4	Ohm
Resonance frequency	Fs	72	Hz
Equivalent volume of air	Vas	5.1	L
Mechanical Q	Qms	7	
Electrical Q	Qes	0.52	
Total Q	Qts	0.48	
Effective piston area	Sd	83	cm <sup>2</sup>
Moving mass	Mms	9.4	g
Suspension compliance	Cms	0.52	mm/N
Mechanical resistance	Rms	0.61	kg x s

**Voice Coil data**

Power handling	P	120*	Watt
Linear excursion	Xmax	+/- 4	mm
Voice coil diameter		38	mm
Voice coil former material		Ti	
Voice coil material		Cu	
Voice coil inductance	Le	0.41	mH
Force factor	Bl	7.3	N/A
Motor type		Overhung	
Ferrofluid filling		no	

\* Please refer to [www.accuton.com](http://www.accuton.com) for exact measurement conditions and further information.