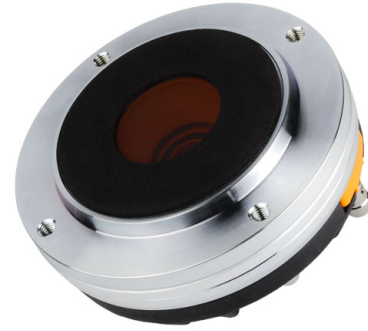


HF142

1.4" - 80 W - 110 dB - 8 Ohm



NOMINAL SPECIFICATIONS

Throat Diameter	35.6 mm (1.4 in)
Overall Diameter	115 mm (4.53 in)
90° Mounting Holes Diameter (4xM6)	102 mm (4.02 in)
Depth	54.5 mm (2.15 in)
Net Weight	1.64 kg (3.6 lb)
Shipping Box (Single carton box)	185 x 170 x 102 mm (7.3 x 6.7 x 4.0 in)
Shipping Weight	1.95 kg (4.3 lb)

PART NUMBER

Push Terminals - 8 Ohm Version	00654272
--------------------------------	----------

NOTES:

- Driver mounted on **FaitalPRO LTH142 Horn**
- Perforated suspension for acoustic tuning
- (1) 2 Hours Test According to AES 2-1984 Rev. 2003
- (2) Maximum power is defined as 3dB greater than nominal power.
- (3) 12 dB/oct or higher slope high-pass filter
- (4) Averaged within the frequency range
- (5) The phase plug is recessed from the driver's exit which is at the end of a conical adaptation horn.

TECHNICAL PARAMETERS

Nominal Impedance	8 Ohm
Minimum Impedance	8.4 Ohm
AES Power above 0.9 kHz (1)	80 W
AES Power above 0.65 kHz	25 W
Maximum Power above 0.9 kHz (2)	160 W
Maximum Power above 0.65 kHz	50 W
Minimum Crossover Frequency (3)	0.9 kHz
Sensitivity (1W/1m) (4)	110 dB
Frequency Range	0.7÷18 kHz
Voice Coil Diameter	65 mm (2.56 in)
Winding Material	Al
Former Material	Kapton
Diaphragm Material	Ketone Polymer
Diaphragm Shape	Dome
Winding Depth	2.1 mm (0.08 in)
Magnetic Gap Depth	4.2 mm (0.17 in)
Flux Density	1.8 T
Magnet	Neodymium Ring
Re	6.7 Ohm
Phase Plug Design	Annular
Exit Angle (5)	29° Conical
NET Air Volume filled by HF Driver	0.4 dm ³ (0.014 ft ³)

