

## KEY FEATURES

- 500 Watt Max Power (LF)
- 50 Watt Max Power (HF)
- 50 mm (2 in) voice coil,copper wire (LF)
- 26 mm (1 in) voice coil,copper wire (HF)
- Interleaved sandwich voice coil (LF)
- Bakelized fabric diaphragm (HF)
- Weather protected membrane for outdoor use (LF)

## MEASURE CONDITIONS

- 25 litres
- Pink noise
- 60 - 2000 Hz, 12 dB/oct
- 2 hours



GENERAL SPECIFICATIONS	LF	HF
Nominal Diameter	8 in - 200 mm	1 in - 26 mm
Nominal Impedance	8 Ohm	8 Ohm
Power handling (AES) (*)	250 Watt	25 Watt
Max Power	500 Watt	50 Watt
Frequency Range	70 ÷ 3000 Hz	2500 ÷ 15000 Hz
Voice Coil Diameter	2 in - 50 mm	1 in - 26 mm
S.P.L. (1w, 1m)	96 dB	100 dB
Nominal Fs	85 Hz	2600 Hz
Flux Density	1.15 T	1.5 T

## MECHANICAL &amp; SHIPPING INFORMATIONS

Net weight	3.7 kg
Overall Diameter	208 mm
Overall Depth	127 mm
Baffle Cut Diameter	184 mm
Mounting bolt diameter	194 mm

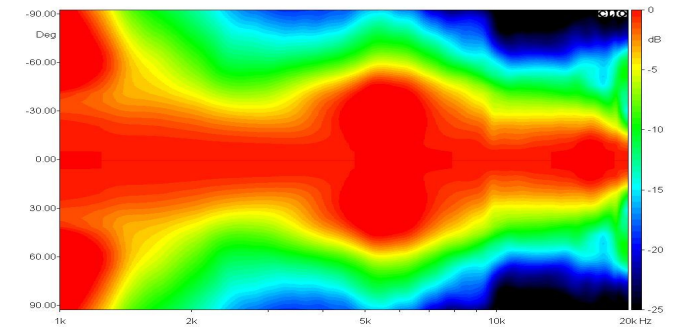
## THIELE-SMALL PARAMETERS

Qms	5.21	Sd	227.00 cm <sup>2</sup>
Qes	0.44	Vas	11.28 liter
Qts	0.41	u0	1.72 %
Fs	88.70 Hz	XMax	4.5 mm
Re	5.72 Ohm	Le	0.49 mH
Mms	20.64 g	Rms	2.21 Kg/s
Cms	0.16 mm/N	Efficiency Bandwidth	201.64
Bl	12.23 T*m		

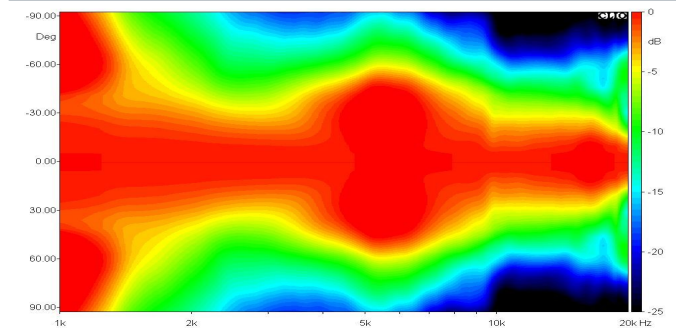
## MATERIALS

Voice Coil Former Material	Kapton (LF-HF)
Voice Coil Wire	Copper (LF-HF)
Membrane Material	Doped Paper (LF), Bakelized fabric (HF)
Membrane Shape	Straight (LF), Dome (HF)
Magnet Type	Ferrite

## HORIZONTAL DIRECTIVITY



## VERTICAL DIRECTIVITY



## DIAGRAM

