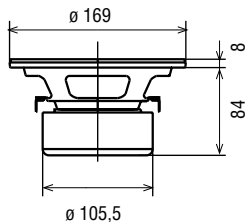


# MS 160

90+90 Watt max | 8+8 Ω | Ø 160 mm / 6"



## SUB WOOFER

Membrana in cellulosa smorzata, sospensione in gomma, magnete schermato  
Doped paper cone, rubber surround, magnetic shielding



Potenza nominale	<b>30+30 W</b>	Re	<b>6,2+6,2 Ω</b>	D	<b>130 mm</b>
Impedenza nominale	<b>8+8 Ω</b>	Fs	<b>50 Hz</b>	Vas	<b>16 dm<sup>3</sup></b>
Sensibilità (1W/1m)	<b>89 dB</b>	Qms	<b>4,01</b>	B×l	<b>10,85 Wb/m</b>
Ø bobina mobile	<b>32 mm</b>	Qes	<b>0,52</b>	Xmax	<b>4,5 mm</b>
Altezza traferro	<b>6 mm</b>	Qts	<b>0,46</b>	η <sub>o</sub>	<b>0,38 %</b>
Fori di fissaggio	<b>4 ∅<sup>5</sup> / Ø 158</b>	Mms	<b>15,7 g</b>	Le	<b>1,96 mH</b>
Foro pannello	<b>142 mm</b>	Cms	<b>0,64 mm/N</b>	Peso	<b>1,79 Kg</b>

