

KEY FEATURES

- Superior sound reproduction quality
- Extended frequency response (1 - 23 kHz)
- High sensitivity (99 dB)
- Extremely linear frequency response
- Low distortion
- Designed for the high frequencies reproduction

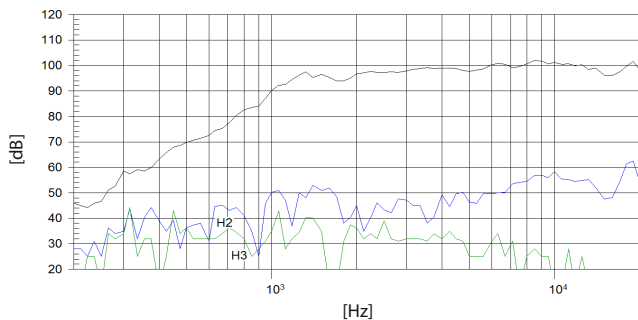
TECHNICAL SPECIFICATIONS

Rated impedance	8 Ω
D.C. resistance	4,9 Ω
Power capacity*	80 W _{AES} above 1 kHz
Program power	160 W above 1 kHz
Sensitivity**	99 dB 1W @ 1m
Frequency range	1 - 23 kHz
Recommended crossover	1 kHz or higher (12 dB/oct min.)

MOUNTING INFORMATION

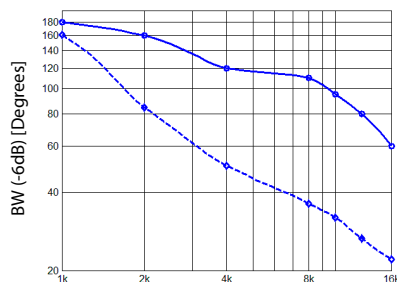
Overall dimensions	160 x 130 x 68 mm 6,30 x 5,12 x 2,68 in
Cutout dimensions	152 x 95 mm 5,98 x 3,85 in
Mounting	Four M5 threaded holes
Net weight	2,08 kg 4,58 lb
Shipping weight	2,20 kg 4,85 lb

FREQUENCY RESPONSE & DISTORTION



Note: On axis frequency response measured in anechoic chamber, 1W @ 1m

-6 dB BEAMWIDTH



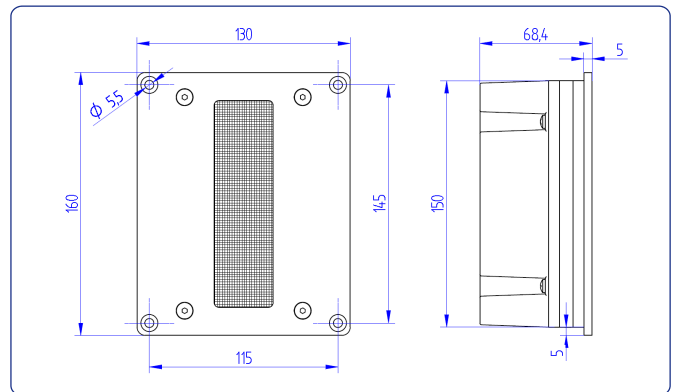
Notes:

* The power capacity is determined according to AES2-1984 (r2003) standard. Program power is defined as the transducer's ability to handle normal music program material.

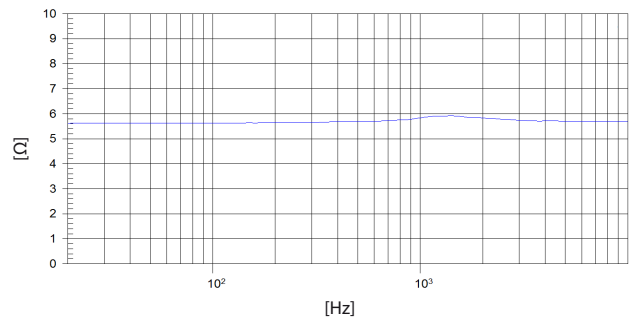
** Sensitivity was measured at 1m distance, on axis, with 1W input, averaged in the range 2,5 - 20 kHz.



DIMENSION DRAWINGS



FREE AIR IMPEDANCE CURVE



DIRECTIVITY INDEX

