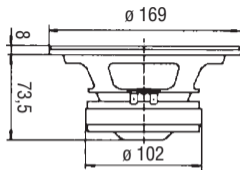


CS 160

120+120 Watt max 4+4 Ω

Ø 160 mm / 6"



SUB WOOFER

Doppia bobina mobile, membrana in cellulosa smorzata e sospensione in poliuretano

Dual coil, doped paper cone, polyurethane surround



Potenza nominale **40+40 W**

Impedenza nominale **4+4 Ω**

Sensibilità (1W/1m) **90 dB**

Ø bobina mobile **32 mm**

Altezza traferro **6 mm**

Fori di fissaggio **4 Ø5 / Ø158**

Foro pannello **142 mm**

Re **3,6+3,6 Ω**

Fs **62 Hz**

Qms **3,05**

Qes **0,6**

Qts **0,5**

Mms **11 g**

Cms **0,6 mm/N**

D **130 mm**

Vas **15 dm³**

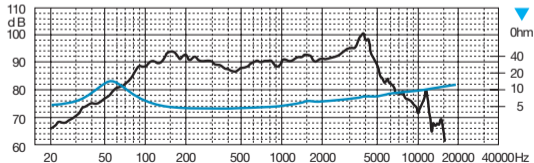
BxI **3,66 Wb/m**

Xmax **2,5 mm**

η° **0,61 %**

Le **0,15 mH**

Peso **1,44 Kg**



Parametri rilevati con bobine mobili in parallelo

Parameters taken with coils in parallel