

CW 169

180 Watt max

4 Ω

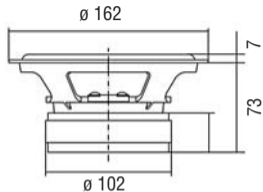
Ø 165 mm / 6,5" nominale



WOOFER

Membrana in cellulosa smorzata, sospensione in gomma

Doped paper cone, rubber surround



Potenza nominale **90 W**

Re **3,33 Ω**

D **130 mm**

Impedenza nominale **4 Ω**

Fs **46 Hz**

Vas **21,22 dm³**

Sensibilità (1W/1m) **90 dB**

Qms **1,81**

B×l **5,94 Wb/m**

Ø bobina mobile **32 mm**

Qes **0,39**

Xmax **3,5 mm**

Altezza traferro **6 mm**

Qts **0,32**

η° **0,52 %**

Fori di fissaggio **4 Ø⁵ / Ø 154**

Mms **14,19 g**

Le **0,318 mH**

Foro pannello **147 mm**

Cms **0,83 mm/N**

Peso **1,780 Kg**

