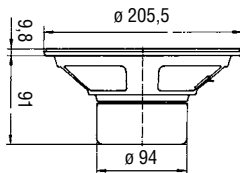
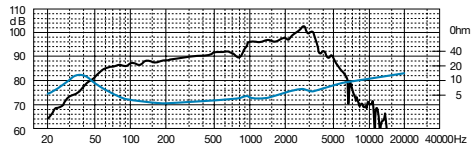


MW 201

180 Watt max | 4 Ω | \varnothing 200 mm / 8"



Potenza nominale	80 W	Re	3,2 Ω	D	165 mm
Impedenza nominale	4 Ω	Fs	36 Hz	Vas	65,4 dm³
Sensibilità (1W/1m)	93 dB	Qms	2,05	BxI	5,47 Wb/m
\varnothing bobina mobile	32 mm	Qes	0,45	Xmax	1,5 mm
Altezza traferro	6 mm	Qts	0,37	η_o	0,68 %
Fori di fissaggio	4 \varnothing 5,5 / \varnothing 194	Mms	18,2 g	Le	0,3 mH
Foro pannello	185 mm	Cms	1,05 mm/N	Peso	1,5 Kg



WOOFER

Membrana in cellulosa smorzata, sospensione in gomma, magnete schermato

Doped paper cone, rubber surround, magnetic shielding

